

Bradford Care Alliance CIC Ltd

General Background Information

June 2017



Bradford Care Alliance

- Alliance of 63 practices across Bradford, all with an equal voice and voting rights
- Led by a Board of Bradford GPs and Business Managers, elected by members
- A strong voice for Primary Care in Bradford, working with the CCG and other providers to deliver the best services possible to our patients – The Provider Alliance.

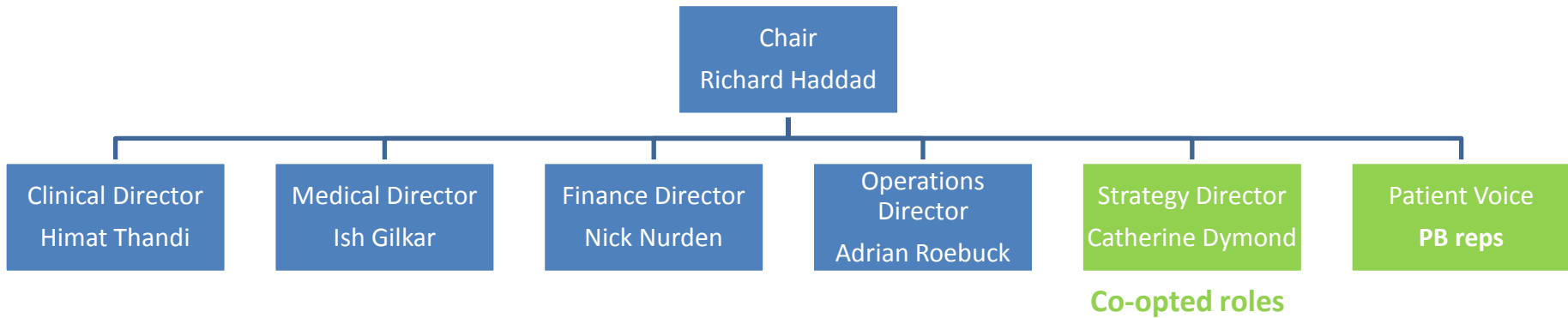
Bradford Care Alliance CIC - The Journey So Far

- 2016 - Early input from potential members and feds
- 2016 - Diabetes work started
- June 2016 - Paperwork completion to become Shareholders
- July 2016 Elected and established our Board
- Mission Statement developed.
- Engaged in “structured collaboration”.
- Extended Access due to start June 2017
- Out of Hospital work has begun.
- Patient Representation sought by the Board

Mission Statement

“Developing New Models of Care and sustainable general practice, in order to improve the health and wellbeing of our community.”

BCA Structure Chart



Operational Support Team

Business Manager – Marie Stout
Business Administrator – Martin Myers

Project Support – Paul Gomersal
– Elaine Price

BCA OD Work Completed

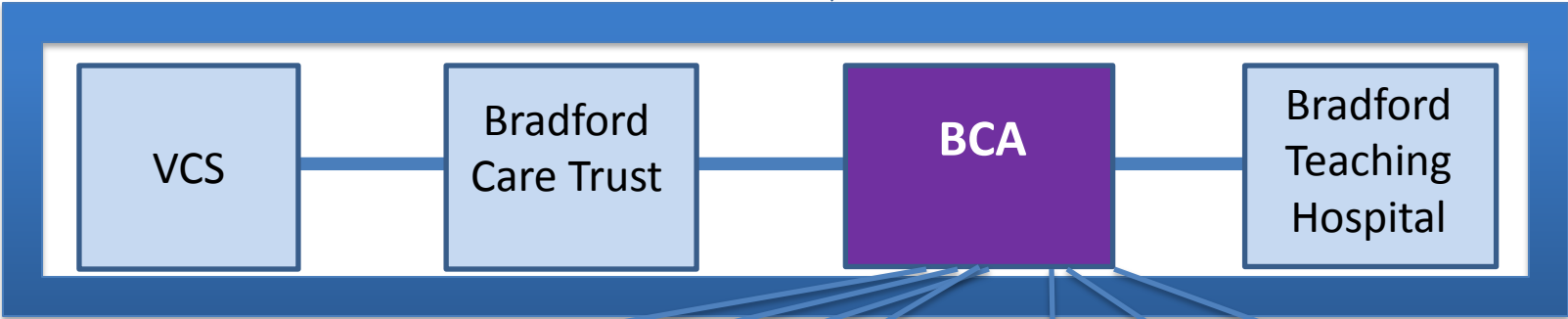
- CQC Registration
- Policies
- Finance
- Insurance
- IG
- Recruitment & Employment

The Bradford Provider Alliance

- Alliance of local health and care providers to deliver an integrated service to patients across Bradford.
- Includes the voluntary sector Alliance with a view to prevention work.
- Brings the Bradford MDC in as provider (adult services / social care).
- Memorandum of Understanding signed by all parties
- Alliance agreement signed with commissioners – our first steps to “accountable care”.

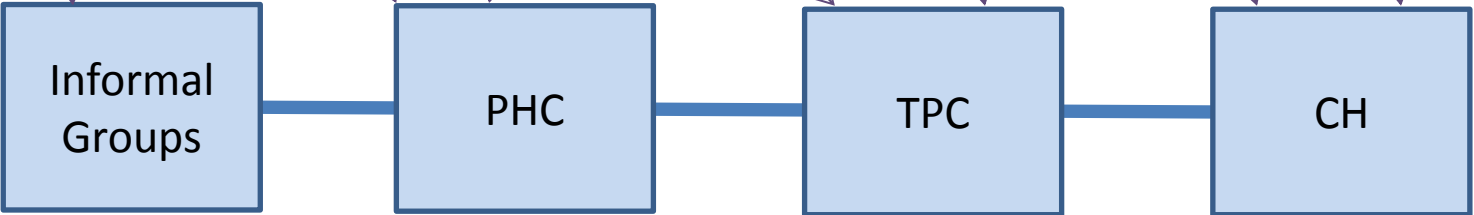
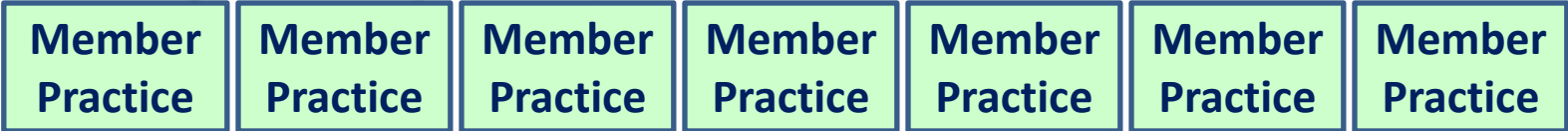
CCG
Commissions a Service

**One Contract to the
Provider Alliance**



Sub-Contracts

63 x



Working as Feds if Desired

Clarification of the Role of Patients

- Patients vital for engagement and innovation
- Can be the “critical friend” to the providers
- Feedback and satisfaction key to all our services
- Input into service re-designs and refinement can be invaluable
- Continue to strive to genuinely “co-design” and not “check the design”.

Clarification of the Role of Federations

- The Federations you have been told about will still exist!
- Federations vital for engagement and communication
- Are seen as a possible delivery vehicle with new models of care (on larger footprints).
- Changes will be organic and stepwise. We do not have fixed models.

Summary

- BCA is a positive move to bring Bradford together.
- BCA is Leading key work-streams in the Provider Alliance
- Alongside the LMC, BCA has provided a strong GP voice at the highest tables in our health economy.
- We all believe in what we can deliver if GPs, their teams and their patients are involved and empowered through the changes.
- Other opportunities already in the pipeline.
- Patient Engagement will enhance our offering.